

08\_ JCaN

**Eur. J. Cancer 2021**

**BRAF+MEK 112**

BRAF+MEK 2010 4 2019 8 16 BRAF+MEK 112  
ORR)\*1 PFS)\*2 OS)\*3  
ALM/MCM, Cutaneous PUM LDH  
RECIST(Response Evaluation Criteria in Solid Tumors)Ver1.1  
95% CI  
PFS OS X<sup>2</sup> log-rank  
PFS OS

- ※1 RECIST(Response Evaluation Criteria in Solid Tumors)Ver 1.1
- ※2 PFS BRAF+MEK
- ※3 BRAF+MEK

**Limitation**

- 
- (quality threshold)
- 

Fujisawa, Y. et al.: Eur. J. Cancer 2021; 145: 210-220.

**(Overall response)**

Image

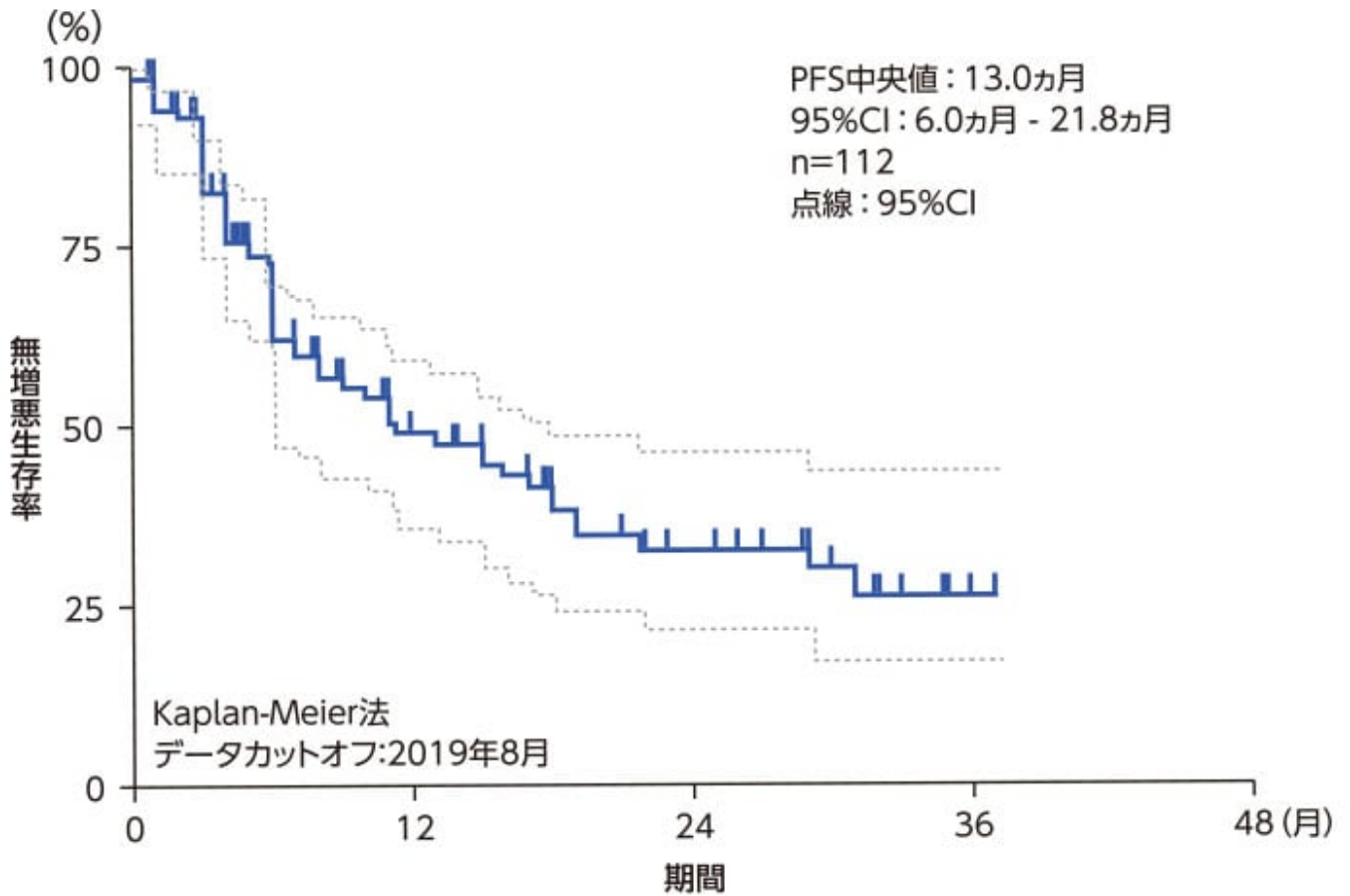
全奏効 (%)	全体 n=112	病 型		
		末端黒子型/粘膜型 n=14	皮膚黒色腫 n=85	
完全奏効 (CR)	23 (20.5%)	4 (28.6%)	18 (21.2%)	χ <sup>2</sup> 検定 p=0.58
部分奏効 (PR)	61 (54.5%)	5 (35.7%)	47 (55.3%)	
安定 (SD)	24 (21.4%)	4 (28.6%)	17 (20.0%)	
疾患進行 (PD)	4 (3.6%)	1 (7.1%)	3 (3.5%)	
奏効率 (95%CI)	75.0% (67.0-82.1)	64.3% (42.9-78.6)	76.5% (67.1-83.5)	-
病勢コントロール率	96.4%	92.9%	96.5%	-

ORR, Overall Response Rate; CR, Complete Response; PR, Partial Response; SD, Stable Disease; PD, Progression Disease

Fujisawa, Y. et al.: Eur. J. Cancer 2021; 145: 210-220.□□□□□□□□

□□□□□□(PFS)□□□□□□

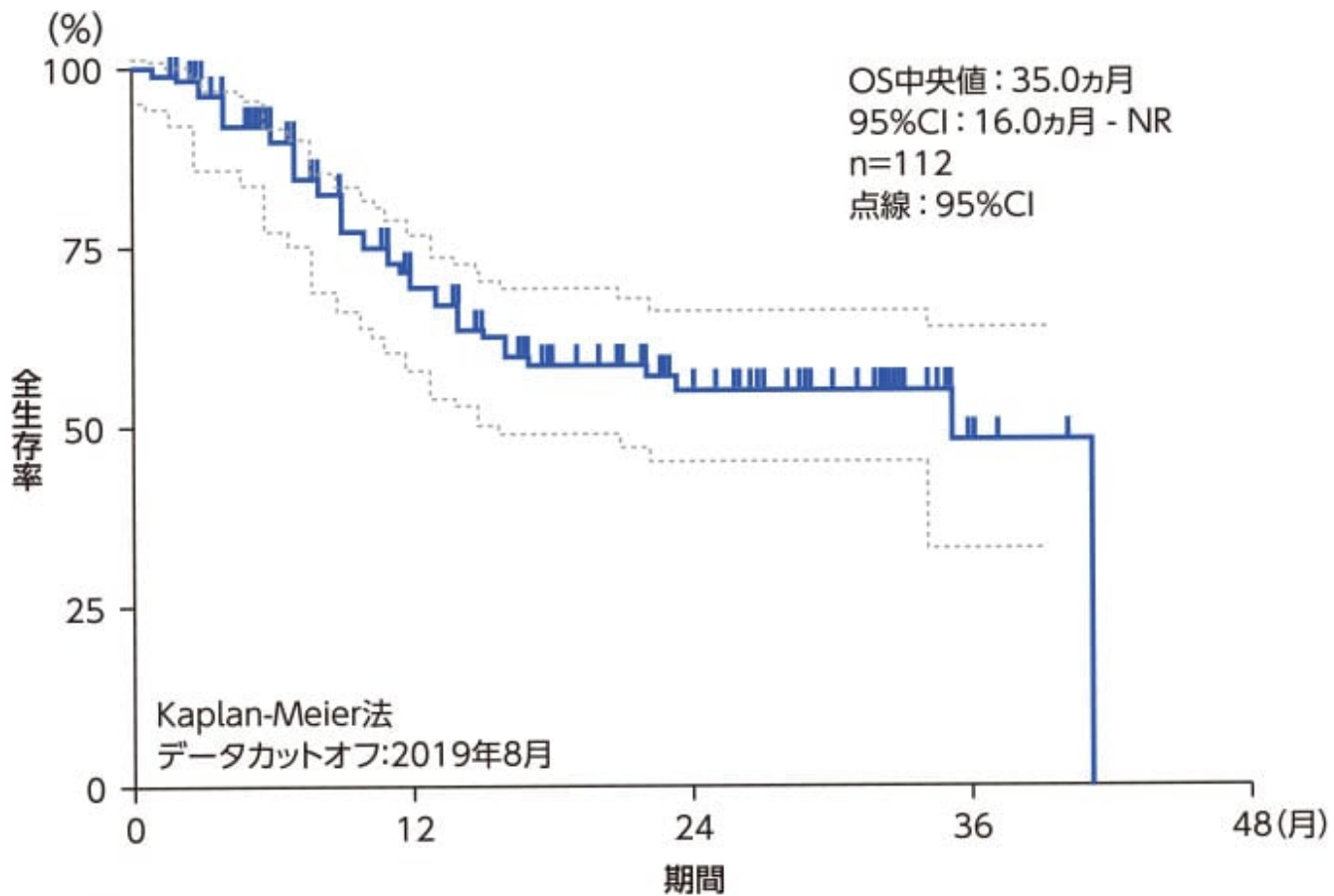
Image



Fujisawa, Y. et al.: Eur. J. Cancer 2021; 145: 210-220.□□□□□□□□

□□□□(OS)□□□□□□

Image



NR: 到達せず

Fujisawa, Y. et al.: Eur. J. Cancer 2021; 145: 210-220.

□□□□□□□□

- □□□□□□□□ 52□□□□□□□□□□□□□□□ 23□ (21%) □□□□□□□□□□□□□□□□ CK□□□□ 5□ (5%) □□□□□□□□
- □□□□□□□□□□□□□□□□□□□□□□□□□□□□□□□□
- □□□□□□□□□□□□□□□□□□□□□□□□□□□□□□□□

Fujisawa, Y. et al.: Eur. J. Cancer 2021; 145: 210-220.

□□□□□□□□□□□□□□□□□□□□□□□□□□□□□□□□□□□□

□□□□□□