

□□□□□□□□**NEN**□□□□□□□□□□□□□□

□□□□□□□□**NEN**□□□□□□□□□□□□□□

□□□□□□□□□□ □□ □□ □□ □ □□

□□□**NEN**□□□

□□□□□□□□



pH  
60pg/mL  
30  
100

VIP

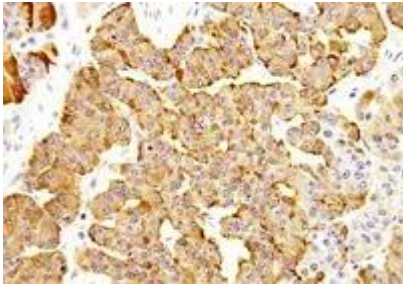




90% Flushing midgut 30 40 midgut 24 5- 5-HIAA A\*

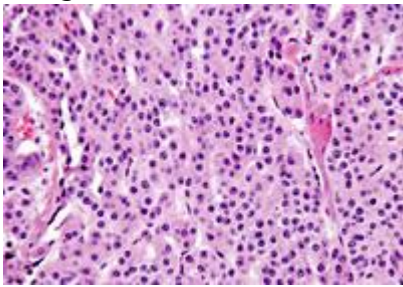
\*

Image



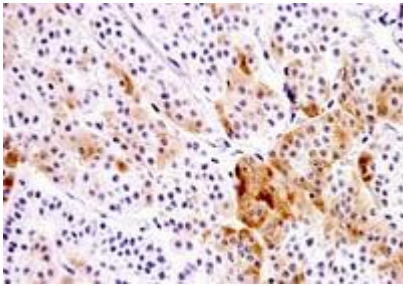
Chromogranin A\*

Image



HE

Image



Gastrin

### 1. Neuroendocrine Neoplasms (NEN)

Location

Prognosis

1, 2

Frequency

- 92% in GI, 51% in pancreas, 38% in lung
- 43% in GI, 23% in lung

World Health Organization (WHO) classification of NEN

Zollinger-Ellison syndrome

- 26-98 cases
- 0-56 cases
- 71-93 cases
- 17-73 cases
- 8-75 cases

Gastrinoma

1, 2

- 22-90 cases
- 14-18 cases
- 54-90 cases

Gastrinoma

- VIP 89% 100%
  - WDHA 67% 100%
  - 44% 100%
  - 14% 33%
- 1,2
- 58% 100%
  - 45% 96%
  - 3% 18%
  - 14% 41%
- 1,3

NIPHS: non-insulinoma pancreatogenous hypoglycemia syndrome, WDHA: watery diarrhea hypokalemia achlorhydria

1 Ito T, Jensen R. Expert Opin Pharmacother. 2021; 22: 685-693.

2 . . 2014; 111: 2263-2271.

3 Khan MS, et al. World J Gastroenterol. 2020; 26: 4537-4556.

. NET, , 2011

**NEN**

NEN

**NEN**





NETは、ECL検査で陽性反応を示すNET患者の診断に有用です。  
NETは、NET患者の診断に有用です。  
NET患者の診断に有用です。EUS検査で2-3cmのNET患者の診断に有用です。  
NET患者の診断に有用です。

NET  
NET. 2020; 78 (4): 737-742  
NET. Pharma Medica 2021; 39: 66-72

NET

NET